



YAHAIRAH ARISTY
Attorney, Community
Leader
Office of the Public
Defender



CALLIE BJURSTROM
Partner
Pillsbury Winthrop Shaw
Pittman



KRISTI BLACKWELL
Branch Managing Partner -
San Diego
Tyson & Mendes LLP



ANN BUCKINGHAM
Partner
Latham & Watkins LLP



JERALIN CARDOSO
Partner and Leader of Corporate
and Securities Practice Group
Sheppard, Mullin, Richter &
Hampton LLP



ALARA T. CHILTON
Attorney/ Owner
Law Office of Alara
T. Chilton



JAIME D. CHOI, PH.D.
Partner
Snell & Wilmer



JODI CLEESATTLE
Supervising Deputy Attorney
General
California Department of
Justice



CAMILLE JOY DECAMP
Equity Partner
Berg Hill Greenleaf Ruscitti
LLP



CHRISTINE Y. DIXON
Associate Attorney
Pettit Kohn Ingrassia Lutz
& Dolin



HILLARY M. DORNE
Attorney
Buchalter



JULIA DUNLAP
Director of Business, Legal,
and Safety Programs
University of California, San Diego
-Division of Extended Studies



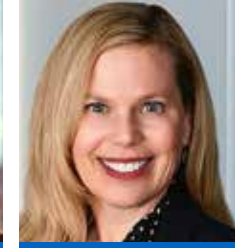
NOEL EGNATIOS
Chief Legal Officer
DivX, LLC



SARAH BRITE EVANS
Partner
Schwartz Semerdjian Cauley
& Evans LLP



SHANNON R. FINLEY
Shareholder / Employment
Attorney
Pettit Kohn Ingrassia Lutz
& Dolin



STACY L. FODE
Partner
Nukke-Freeman & Cerra,
P.C.



EMILY FOX
Partner and Employment
Group Chair
Wilson Turner Kosmo



STEFFI GASCÓN HAFEN
Managing Partner of the San
Diego Office
Snell & Wilmer

SAN DIEGO BUSINESS JOURNAL
**Women
of Influence
in Law 2022**



SAMANTHA HARDY
Partner, Co-leader, Retail,
Fashion & Beauty Team
Sheppard, Mullin, Richter &
Hampton LLP



WHITNEY HODGES
Partner
Sheppard, Mullin, Richter &
Hampton LLP



EMILY HOWE
Principal | Founder
Law Offices of Emily E.
Howe



DANIELLE C. HUMPHRIES
Partner | Chair of Trusts & Estates
Practice in San Diego Office
Hahn Loeser & Parks LLP



MICHELLE L. JACKO
Managing Partner and CEO
Jacko Law Group, PC



ALLY KEEGAN
Associate Attorney
Law Office of David P.
Shapiro



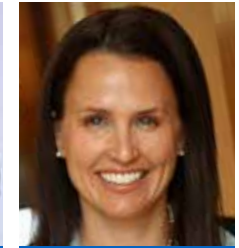
MONIQUE LASHBROOK
Partner
Snell & Wilmer



KATIE LEPORE
CPA, Associate
Miller, Monson, Peshel,
Polacek & Hoshaw



MÁRCIA YAFUSO LOEFFELHOLZ
Partner Attorney
Hecht Solberg Robinson
Goldberg & Bagley LLP



JENNIFER N. LUTZ
Shareholder / Employment
Attorney
Pettit Kohn Ingrassia Lutz
& Dolin



CAYCE LYNCH
Administrative Partner
Tyson & Mendes LLP



MHAIRI MARSH
Senior Director, Legal
Counsel
Qualcomm



LISA M. MARTENS
Partner
Sheppard, Mullin, Richter &
Hampton LLP



SARA NEVA
Partner
Procopio



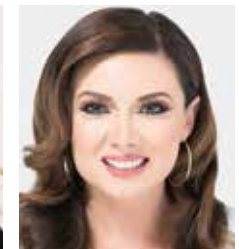
SUSAN OLIVER
Partner
Tyson & Mendes LLP



STACEY O'NEILL
Managing Partner
Jurewitz Law Group



NATALIE PRESCOTT
Deputy General Counsel
Fulgent Genetics



JESSICA PRIDE
Sexual Assault Attorney
The Pride Law Firm



SALLY REDDY
Supervising Attorney
Dallo Law Group



KRISTEN G. ROBERTS
Founder & Managing
Attorney
Trestle Law, APC



ANNA M. ROMANSKAYA
Attorney/ Partner
Stark & D'Ambrosio LLP



JENNIFER ROY
Partner
Latham Watkins



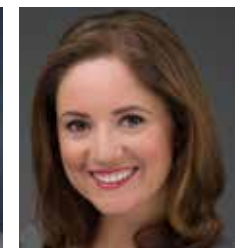
AMELIA SANCHEZ
Partner
Crosbie Gliner Schiffman
Southard & Swanson LLP
(CGS3)



SARAH T. SCHAFER
Principal Attorney
Schaffer Family Law Group



RENÉE SCHOR
Partner
Schor Vogelzang & Chung
LLP



DINA SEGAL
VP Head of Strategic
Transactions and Financial
Technologies, Legal
Gusto Inc.



RENEE N.G. STACKHOUSE
Owner/Trial Lawyer
Stackhouse, APC



CHRISTINE D. STANSALL, ACP
Practice Technology Project
Manager
Latham & Watkins



MARESA TALBERT
CEO
Talbert Law Office, APC



AMY TRANCKINO
Partner; Former Practice Group
Leader of the Tax, Employee
Benefits and Trusts and Estates
Practice Group
Sheppard, Mullin, Richter &
Hampton LLP



KANDACE WATSON
Partner
Sheppard, Mullin, Richter &
Hampton LLP



BHASHINI WEERASINGHE
Owner
Law Office of Bhashini
Weerasinghe



JENNIFER CHANG WOLFE
Partner Attorney
Hecht Solberg Robinson
Goldberg & Bagley LLP



LILY ZHANG
Member
Mintz

SAN DIEGO BUSINESS JOURNAL
WOMEN OF INFLUENCE IN LAW



EMILY FOX

Partner and Employment Group Chair
Wilson Turner Kosmo

Emily Fox is Partner and Chair of the Employment Law practice group at Wilson Turner Kosmo LLP. A respected authority on employment law, she is committed to advancing diversity in the legal industry. She is a skilled negotiator with a record of achieving favorable outcomes in high-stakes, employment-related disputes including wage and hour, harassment, discrimination and retaliation. She also helps clients avoid litigation. A leader at one of the largest certified women-owned law firms in California, Fox creates opportunities for women and minority attorneys to advance their careers. She's a driving force behind WTK's diversity, professional development and service to the legal industry initiatives.

A Forever Balboa Park Trustee, Fox helps find creative solutions for challenges facing San Diego's crown jewel, including providing pro bono human resource and employment law advice. She also helped the organization navigate the complexities of the pandemic. She can be reached at efox@wilsonturnerkosmo.com or 619-236-9600.

WILSON TURNER KOSMO
LLP



STEFFI GASCÓN HAFÉN

Managing Partner of the San Diego Office
Snell & Wilmer

Steffi Gascón Hafén is managing partner of the San Diego office of Snell & Wilmer. Her practice is concentrated in tax, trust and estate matters with emphasis in estate planning, trust and probate administration, and estate and gift taxation.

In January 2019, Hafén was elected to her firm's partnership in her first year of eligibility, a feat in and of itself. Partnership selection at Snell & Wilmer is based on a comprehensive look at an attorney's demonstrated skills and potential as a lawyer and partner, and commitment to the firm, clients and the community. She was the only female partner in her practice group across all offices. In 2020, Hafén relocated from Snell & Wilmer's Orange County office to help lead the opening of the San Diego office.

Hafén received her L.L.M. in Taxation from Loyola Law School and her J.D. from USC's Gould School of Law. She can be reached at shafen@swlaw.com or 858-434-5002.

Snell & Wilmer



SAMANTHA HARDY

Partner; Co-leader, Retail, Fashion & Beauty Team
Sheppard, Mullin, Richter & Hampton LLP

Samantha Hardy is a partner with Sheppard Mullin in its Labor and Employment practice group. She also leads the firm's Retail, Fashion & Beauty Team, and is active on the Food and Beverage team.

Hardy's focus is on defense of employers in all types of labor and employment matters, as well as on proactively advising employers to avoid litigation. She has handled single plaintiff discrimination, retaliation, harassment, failure to accommodate, wrongful termination, and defamation cases, as well as other statutory, contract and tort-related claims, and has developed an expertise in California and national wage and hour issues. She has a significant amount of experience representing employers in class actions, both within California and nationwide, as well as representing employers before administrative agencies.

Hardy has been active in influencing legislative changes of interest to her clients both inside and outside California. She can be reached at shardy@sheppardmullin.com or 619-840-9554.

SheppardMullin



WHITNEY HODGES

Partner
Sheppard, Mullin, Richter & Hampton LLP

Whitney Hodges is a partner at Sheppard, Mullin, Richter & Hampton LLP in the firm's San Diego office. As part of the Real Estate, Land Use and Natural Resources Practice Group, she represents clients involved in residential, industrial, commercial and mixed-use development projects, as well as Native American Indian tribes and renewable energy developers through all phases of the land use regulatory process and environmental compliance. Her land use experience includes real estate due diligence investigations, negotiating and drafting development agreements, processing land use entitlements, advising tribal governments on environmental and natural resources law, and appearing before governmental agencies and commissions.

In addition, she leads the firm's Cannabis Industry Team and is Recruiting Chair for the San Diego office. In her free time, Hodges is an adjunct professor at USD and serves as a kitten foster home for the San Diego Humane Society. She can be reached at whodges@sheppardmullin.com or 619-338-6542.

SheppardMullin



EMILY HOWE

Principal | Founder
Law Offices of Emily E. Howe

Emily Howe is principal and founder of the Law Offices of Emily E. Howe. Her success is based on a human-based approach with integrity, compassion and results. She helps socially conscious individuals, nonprofits and startups understand and access their rights. Her main areas of practice include wrongful death-catastrophic injuries, individual-civil rights, and trusts-estate planning. She successfully represents and empowers clients during difficult and stressful times.

Howe serves as President-elect of the Pan Asian Lawyers of San Diego and sits on the boards of the San Diego Library Foundation and La Jolla Bar Association. She is a founding director of the San Diego Asian American Legal Education Fund and an active and lifelong member of numerous organizations and affinity bars. Her bar admissions include: California; Massachusetts; District of Columbia; U.S. District Courts; U.S. Court of Appeals for 9th and 10th Circuits; Supreme Court of the United States. She can be reached at info@howelaws.com or 619-800-6605.



DANIELLE C. HUMPHRIES

Partner | Chair of Trusts & Estates Practice in San Diego Office
Hahn Loeser & Parks LLP

Danielle C. Humphries, Partner at Hahn Loeser & Parks LLP, is Chair of the Trusts & Estates Practice in the firm's San Diego office. She serves as general counsel for families, managing a multitude of legal issues, including trust and estate related issues, wealth preservation and protection, philanthropic planning, and tax planning.

She has extensive experience representing fiduciaries and beneficiaries in complex trust and estate administration and litigation. Her representation of fiduciaries includes advising individual and corporate fiduciaries on risk mitigation and their duties and responsibilities in the course of administration of trusts and estates. Humphries has earned a stellar reputation as a trusted adviser with experience, insight, and sophistication. Her genuine, caring nature, coupled with her depth of experience, is evident in that her greatest source of new clients is through referrals. Humphries is an extraordinary role model and advocate for gender parity within the legal industry. She can be reached at dhumphries@hahnlaw.com or 619-810-4300.

HAHN LOESER
attorneys at law



MICHELLE L. JACKO

Managing Partner and CEO
Jacko Law Group, PC

Michelle L. Jacko is the Managing Partner and CEO of Jacko Law Group, PC, which offers securities, corporate, real estate and employment law counsel to broker-dealers, investment advisers, investment companies, hedge/private funds and financial industry professionals. In addition, she is the Founder and CEO of Core Compliance & Legal Services, Inc., a compliance consultation firm. She specializes in investment adviser, broker-dealer, and fund regulatory compliance matters, internal control development, regulatory examinations, transition services and operational risk management.

Her practice is focused on the areas of regulatory exams and formal inquiries, mergers and acquisitions, annual reviews, policies and procedures development, testing of compliance programs (including evaluation of internal controls and supervision), mock exams, senior client issues, cybersecurity, Regulation S-P, and much more. As a frequent presenter at national financial industry conferences, Jacko delivers insightful and thought-provoking workshops regarding industry hot topics and rising compliance issues. She is a frequent contributor to various industry journals.



ALLY KEEGAN

Associate Attorney
Law Office of David P. Shapiro

Ally Keegan is Associate Attorney in the Law Office of David P. Shapiro. She has practiced criminal defense on both the state and federal levels. Having handled various types of cases in every stage of the defense process, she understands the care and attention that every person accused of a crime needs and deserves. She is proud to have the opportunity to defend people in their darkest hour. She knows that at the end of the day, the most gratifying part of her job is being able to help her clients navigate our complicated legal system. Since 2021, she has served as an Adjunct Professor of Criminal Law at the USD School of Law Paralegal Program. Additionally, in the spring of 2022, Keegan added to her profile as a legal expert for Fox News after the sentencing of Jussie Smollett. She can be reached at Ally@DPShapiro.com or 619-295-3555.

